

BUILD YOUR OWN STRIP STOCK CAROUSEL

(or “Why should I pay THAT much?”)

I was looking around the **Fast Tracks** [Lumber Store Rotating Rack \(handlaidtrack.com\)](http://handlaidtrack.com) web site when I saw this

Product Search

FAST TRACKS

[Home](#) > [Mt. Albert Scale Lumber](#) > [Railroad Ties, Scale Lumber and Scale Siding](#) > [The Lumber Store](#) > [Lumber Store Only](#)

The Lumber Store Rotating Storage Rack Kit

LS-RACK

The Lumber Store
Rotating Storage Rack

Empty Storage Rack
24 - 1" dia. tubes




★★★★★ [Read Reviews \(11\)](#)

\$59.95 US

1 In Stock
3-5 days

You will earn **60** WayPoints for each product that you purchase.




\$59.95 US

− 1 +

★ Review This Item

↪ Email A Friend

♥ Add To Wish List

 **ADD TO CART**

Whaaaaat?

Carousel	\$60.00
Al internet tax (8%)	\$ 6.40
Shipping	\$11.70
	<hr/>
	\$78.10

FOR ONE!

(I need 3 anyway) [I'll plan for 4 – in case I ...
encounter an error]

I CAN MAKE THAT!

Wait – What can I **NOT** make?

1" thin wall plastic tubes with endcaps about 12" long.

My GOTO for all kinds of plastic :

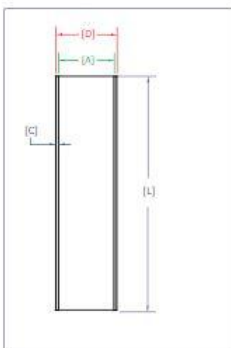
ClearTec Packaging, Park Hills, MO

<https://cleartecpackaging.com/>

100 ea 1" x 12" x 0.018" PETG tubes	\$40.98
100 ea 1" clear caps	\$17.60



Home > Thin Wall Round Tubes



Reference # ... PRT018-1.095

Nominal Size ... 1"

Inside Diam. ... 1.095"

Wall Thickness ... 0.018"

Outside Diam. ... 1.131"

Length ... *

Stocked Length ... 12.48

Box /Mini QTY ... 50 -150/25

[Size Chart - Click Here](#)

1.0" ROUND THIN WALL X 12 TUBE PETG-000

SKU# PRT01540

1 Configure your item

Nominal Size

1.000" (25.4mm) ... Stock Item

Length

12.000" (304.8mm) ... Stock Item

Quick-Ship Stock - Same-Day shipping for orders placed before 2PM (CDT) M-F on normal business days, subject to stock availability.

2 Select Quantity

PRT01540
Qty: 50 x 0.4303 = \$21.52 (Box x 1)

3 Select Your Closure

Choose a closure (optional)

	PCC1.000 - [PCC] 1" CLEAR CAP FOR UT	Qty: 50
Type	Plastic Clear Caps - PCC	Price x 0.1883
Nominal Size	1.00000	Total \$9.41

Choose a closure (optional)

	Type	None	Qty: 50
			Price x 0.0000
			Total \$0.00

4 Add to your cart →

ADD TO CART

MY CART

You have no items in your shopping cart.

Closure options for your 1.000" tube

- PCC1.000
[PCC] 1" CLEAR CAP FOR UTW
- PHP1.000BLK
1" HANGER PLUG BLACK
- PHP1.000NAT
1" HANGER PLUG NATURAL
- PHP1.000RED
1" HANGER PLUG RED
- PRP1.000BLK
1" POLY PLUG BLACK
- PRP1.000NAT
1" POLY PLUG NATURAL
- PRP1.000RED
1" POLY PLUG RED
- RVCC9397-5
1.002 X 1 STD BLACK CAP
Fits 1.000" tube
- RVCC9397R-5
1.002 X 1 STD RED CAP
Fits 1.000" tube
- VHCC9502-10
1.002X2 = 1 LENGTH BLACK
Fits 1.000" tube

These choices will be displayed again after you have added your selected tube to your cart.

Lazy Susan base – Bed, Bath, & Beyond



Copco

Copco Cabinet Lazy Susan in
Black/White



[322 Reviews](#)

[Write Review](#)

[Product Q&A](#)

REGULAR PRICE

\$5.99

BEYOND+ MEMBER PRICE

\$4.79

You save \$1.20 (20% off) [Sign Up Now!](#)

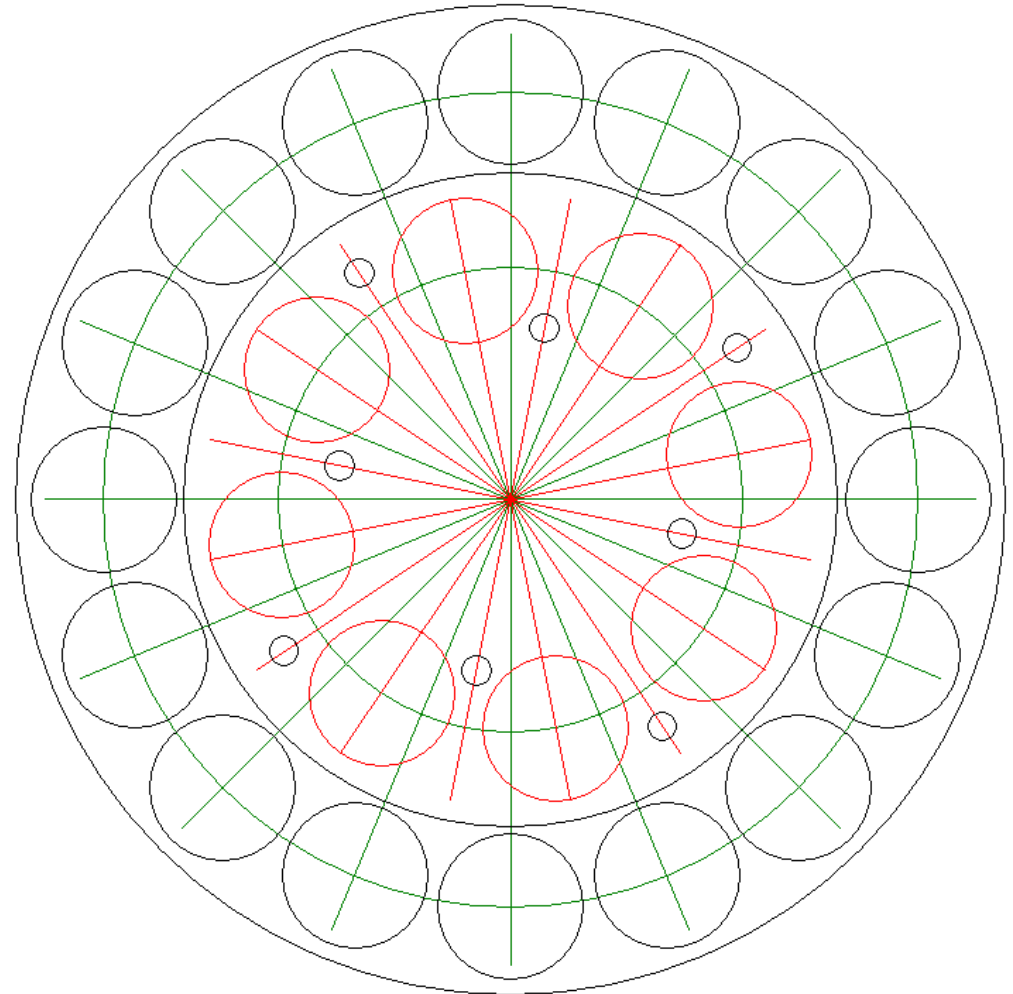
Free Shipping on Orders Over \$39 ⓘ

Three Tier

24 Total positions = 16 lower + 8 upper tubes

Lazy Susan base

1. Top Tier
1.25" tube clearance through holes x 8
0.25" dowel support through holes x 8
2. Middle Tier
1.25" tube bottom blind holes (inner set) x 8
1.25" tube clearance through holes (outer set) x 16
0.25" dowel support through holes x 8
3. Bottom Tier
1.25" tube bottom blind holes x 16
0.25" dowel support through holes x 8
4. Dimensions for height depends on tube length and tier material thickness. For 12" tubes, about 1" should protrude from each level.



Material Stock

24" x 24" x 1/4" MDF [Lowe's \$6.00][makes 2 ea] x 2 = \$13.20

1/4" x 48" wood dowel [Lowe's \$0.91] x 16 = \$17.62

Gorilla Glue (already had some)

METHODOLOGY

Know what you are working with (materials, tools, machines, **SAFETY**)

Stock is ¼" Medium Density Fiberboard MDF

Water / moisture sensitive – turns to mush and loses integrity

Saws well vertically

Loses integrity in torque – drills medium to poorly

MDF dust contains formaldehyde [HCOH] – **WEAR A MASK**

Dowel is ¼" hardwood. Fine-tooth saw cutting (hand saw, back saw, coping saw)

Some toolings are through holes, some are blind holes.

Drill Press at least a 6" throat preferred.

Hand Drill with "drill press" attachment.

Choose a 1-¼" Forstner Bit for tube holes, blind and through.

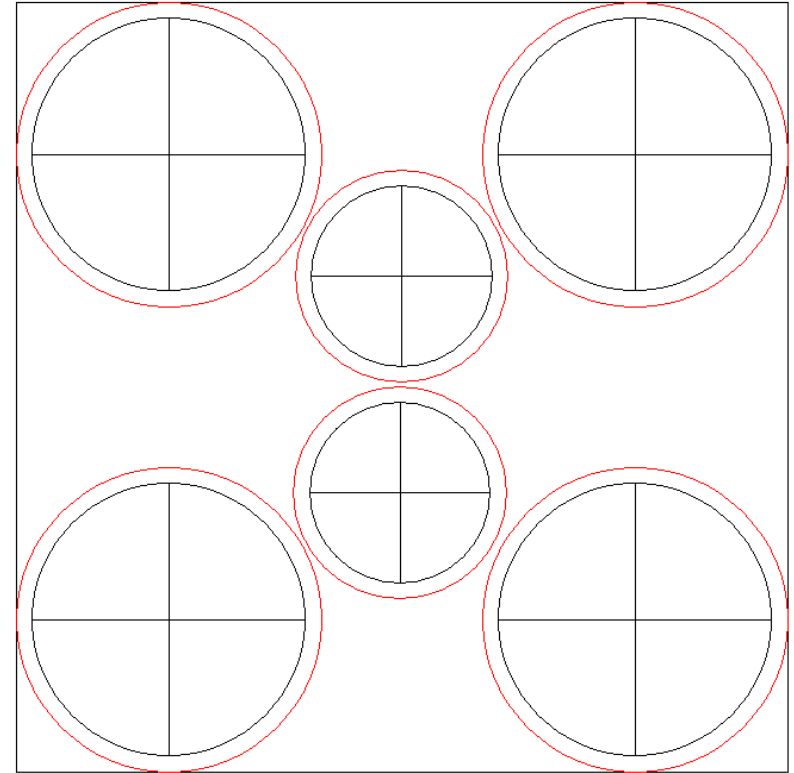
Choose a ¼" twist bit for dowel through holes.

Band Saw, or Jig Saw for blanking.

Band Saw or Jig Saw for finishing.



- Layout with at least $\frac{1}{2}$ " fat from piece edge for each piece. Adhere cut-out templates to stock with workable (repositionable) spray mount [24" x 24" blank]



- Prick-punch all the drill hole centers.
- Cut blanks apart with preferred saw(s) – leave a $\frac{1}{2}$ " fat edge.
- Start drilling through and blind holes.
- Assemble – bottom up.

Theirs - \$78.10 for ONE!

Mine:

100 PETG tubes	\$40.98
100 End Caps	\$17.60
2 x 24" sq ¼" MDF	\$13.20
1/4 " x 48" x 16 dowels	\$17.62
Lazy Susan x 4	\$21.08

Total \$110.48 for FOUR or **\$27.62 for ONE**

Q.E.D.